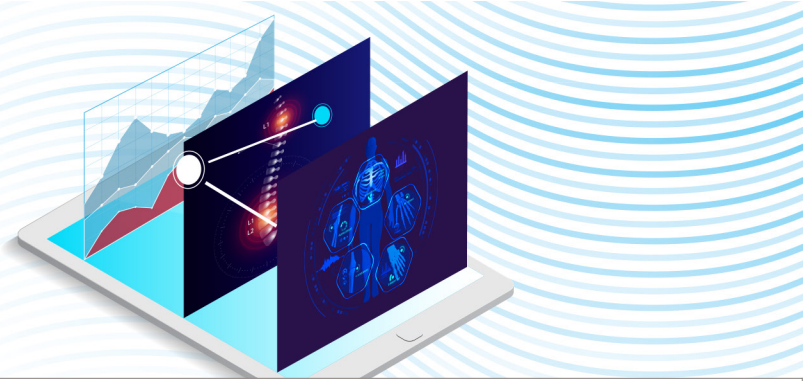




# CHART ACQUISITION PLATFORM



## IMPROVING THE EFFICIENCY OF HEALTHCARE SERVICES

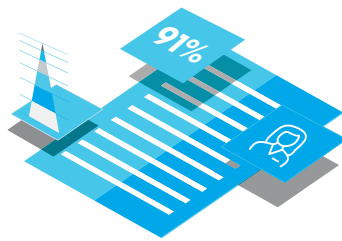
The GRM Chart Acquisition Platform automates and accelerates the capture of large volumes of patient chart data while also providing healthcare companies and their contract services partners with important business insights into billing and claims processing.

This degree of automation and improved business-metric visibility is capable of drastically improving the profitability of an organization by reducing the prevalence of write-offs due to filing denials, decreasing the number of patient encounters that can't be billed and eliminating the expense of reprocessing claims and billing.



### PAIN-FREE IMPLEMENTATION

The web-based, modular build of our Chart Acquisition Platform allows for a simple installation process with no time-consuming or costly configurations.



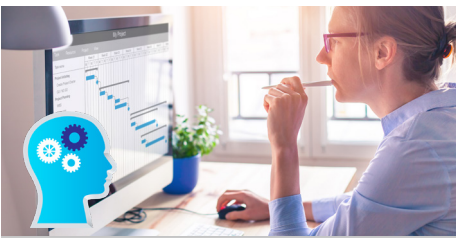
### ADVANCED DATA CAPTURE

We capture structured and unstructured chart data from multiple sources in a variety of ways, eliminating the need for manual data entry. Documents are then analyzed to ensure completeness and accuracy.



### WORKFLOW AUTOMATION

After analysis, charts are pushed into automated workflows. Incomplete or inaccurate charts go to proper users so additional data can be appended, while complete charts go to the client's billing system.



### UNMATCHED SCALABILITY

Our platform's unique architecture allows massive amounts of documents to be processed accurately and quickly in a highly-scalable environment suitable for a growing hospital or healthcare system.



### HIGHLY ADAPTABLE

Given our platform's flexible structure, workflows can be built and customized over time by clients to address new processing demands. And, staff can easily create custom reports related to claims processing.



### VALUABLE ANALYTICS

Administrators can gain immediate insight into business processes and claims department performance—leveraging advanced analytics to identify areas for improvement and optimization.